

RLM11

High Security 1.9x15mm Micro Cut Large Office Shredder

The Mercury Large-Office high security & high capacity shredder is ideal for heavy duty shredding in large offices

- High performance shredder with heavy duty motor
- 1.9x15mm micro cut, security level S4 for high security
- Large sheet capacity (12 sheets, 70gsm; 11 sheets, 80gsm)
- Easy to use controls
- Power saving mode activates automatically after 5 mins of non-use
- Pull out frame with separate waste bin for CDs & DVDs
- Super quiet due to induction motor
- Self cleaning technology

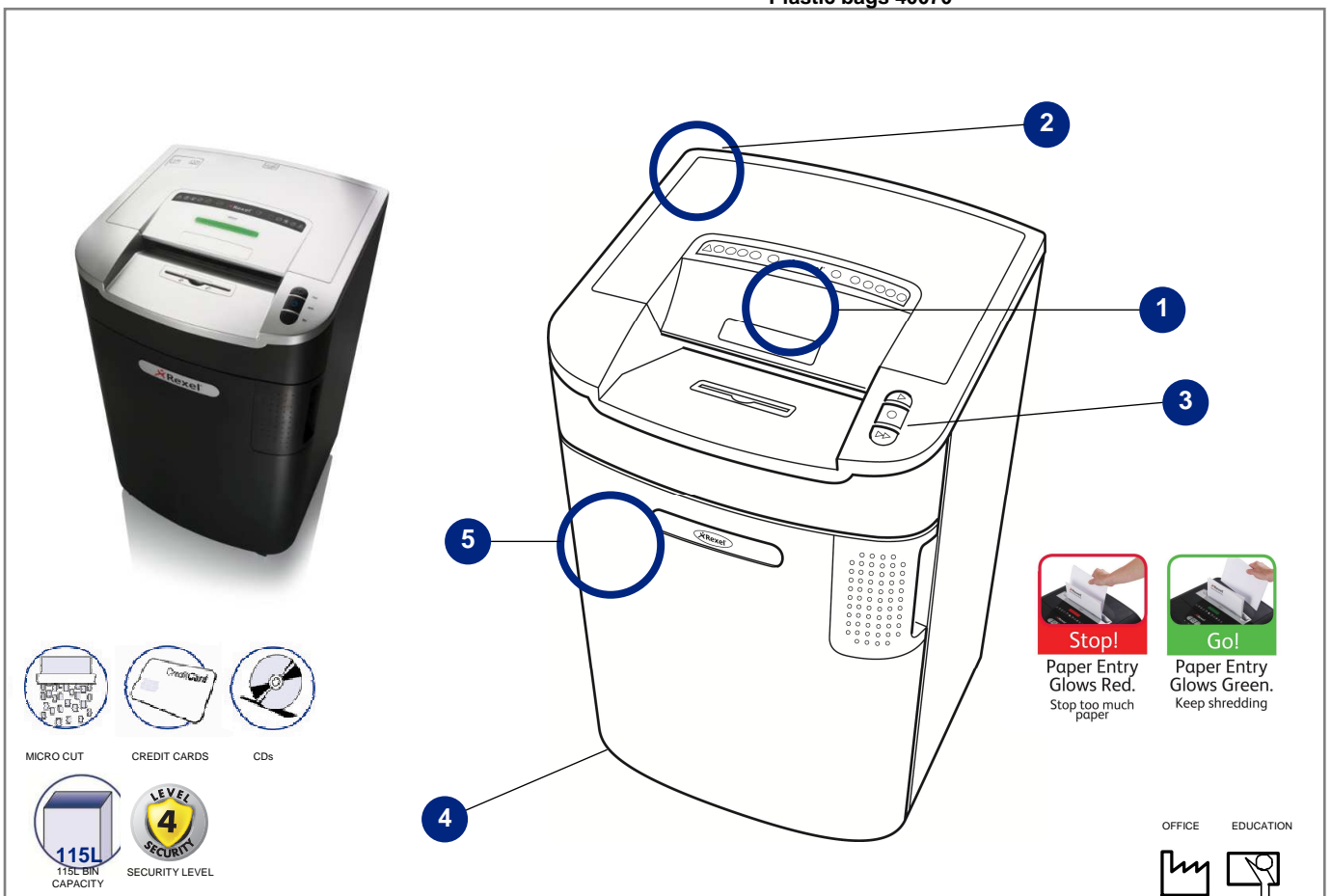
Features & Benefits

- 1 Jam Free Technology
- 2 Auto-Oiling system
- 3 Easy to use controls
- 4 4 x Swivel castors for easy positioning
- 5 115 litre pull out frame (1250 sheets)
- 6 Separate mouth for CDs & DVDs
- 7 260mm shredder mouth

Waste bags:

Recycling bags: 2102248

Plastic bags 40070



The National Regulator for Compulsory Specification (NRCS) requires that all electrical goods are cleared for importation by the South African Bureau of Standards (SABS). Letters of Authority (LOA`S) issued by the NRCS for Rexel and GBC electrical machines can be found on www.rexelsa.co.za

Technical Specifications

Cutting Style	Micro Cut	Power consumption (Watts)	1150
Shred Capacity (70gsm)	12	Working cycle on/off	Continuous
Shred Capacity (80gsm)	11	Run Time from Cold	Continuous
DIN Security Level	4	Weight kg	58.4
Shred Size (mm)	1.9x15	Pack Weight kg	76.5
Shred Speed m/min (single sheet)	5.5	Staples	-
Dimensions (mm) H x W x D	900x540x540	Paper Clips	-
Pack Dimensions (mm) H x W x D	723x1010x660	Credit Cards	Yes
Working Width (mm)	260	CDs	Yes
Bin Capacity (litres)	115	Certification	CE,TUV, GS
Sound Level Decibels @ 1m	55	Warranty Period	2 years
Auto Reverse on Jamming	Yes	Warranty Cutters	20 years**

Product Codes:

UK 2102449
EU 2102449
CH 2102449CH



www.accoeurope.com

* We recommend customers to remove staple pins & paperclips to protect cutters.

** Excludes general wear and tear. ACCO reserves the right to modify specifications without notice.