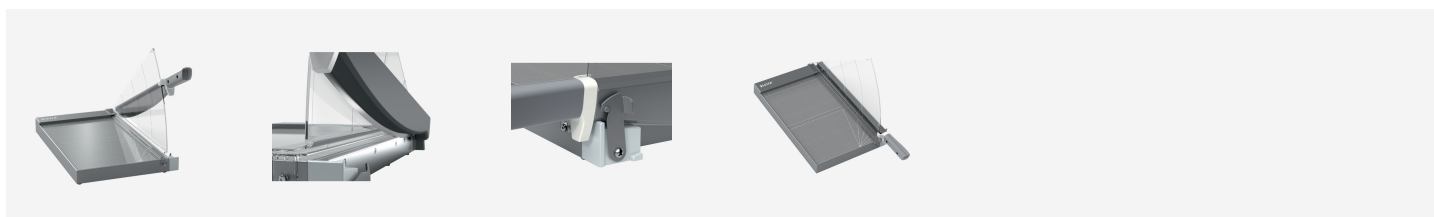


## Leitz Precision Office Pro Paper Cutter A4+

The Leitz Precision Office Pro A4+ Paper Cutter is perfect for frequent office use to cut through paper, labels, film, photos, laminates, card and mount board. This powerful and robust commercial paper guillotine will effortlessly cut up to 25 sheets of A4 paper (80gsm) with speed and precision. Features unique EdgeGlow light technology which illuminates the cutting edge for greater visibility and maximum precision. The clear, manual paper clamp keeps the paper secure, while the ergonomic handle ensures comfortable and easy cutting. It is quick and easy to align the paper with the simple guidelines on the smooth, glass work surface. The secure blade safety guard gives total protection and the safety latch keeps the blade locked closed while not in use. With a high quality stainless steel blade, sturdy work surface and an extended 5 year guarantee, you have peace of mind that this A4+ paper cutter will provide accurate cutting for many years.



### Attributes

- Powerful and robust A4+ paper cutter ideal for frequent and high volume office use
- The high-quality stainless-steel blade cuts up to 25 sheets of 80gsm paper or other materials such as labels, film, photos, laminates, card and mount board
- Unique EdgeGlow light illuminates the cutting edge for greater visibility and maximum precision
- Ergonomic handle ensures effortless and accurate results every time
- Clear manual paper clamp securely holds the paper in place
- Super smooth glass work surface with simple metric grid lines, angle guides and accurate measuring rules for easy paper alignment
- Strong but lightweight aluminium base with non-slip rubber feet for safety and stability
- Secure blade safety guard gives total protection while the safety latch keeps the blade locked closed when not in use
- High quality Leitz paper cutter with a 5-year hassle free guarantee (excludes normal wear parts & consumables)

### Specifications

Number	90230000
Colour	anthracite
Material	Premium Glass Bed
Dimensions (W x H x D)	585 x 360 x 300 mm
Cutting capacity 80 gsm in sheets	25
For Format	A4+
Cut Type	Precision Ground Steel
Period of Warranty (Years)	5
Weight	3650 g
Packing unit	1
Pallet quantity	24
Minimum order quantity	1
EAN code	4002432129720