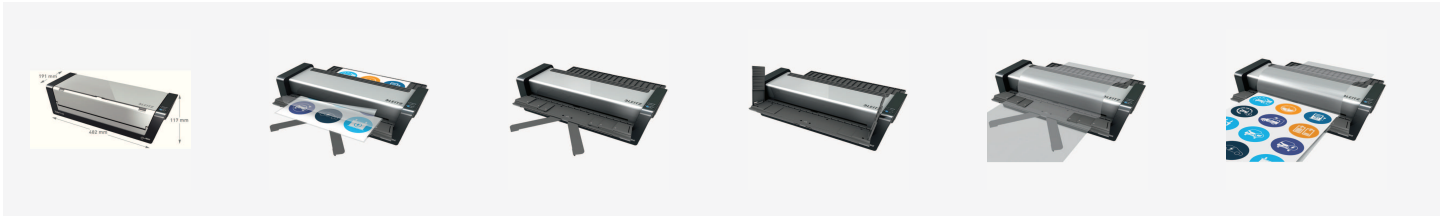




Leitz iLAM Touch Turbo Pro Laminator A3 EU

Fully automatic A3 high speed premium laminator with unique smart sensor technology. Recognises document thickness and automatically selects the best speed. Suitable for 80-250 microns. Just 1 min. warm-up time. With unique easy feed system for convenient insertion. For intensive professional use.



Attributes

- Unique smart sensor technology - no complicate settings - perfect results!
- 2000 mm/min laminating speed - ideal for heavy usage
- 1 min. warm-up time. No need to wait when switching between different pouch thicknesses
- Convenient insertion thanks to easy feed system and unique patented fold out flaps ensuring consistently even, high quality lamination
- Low energy consumption, auto shut-off when the device isn't used for 30 minutes
- Auto reverse function – prevents jamming when the laminator is misfed
- For 80 to 250 microns
- Takes approximately 10 seconds to laminate one 80 micron A4 sheet
- LED on/off and reverse indicator
- Includes free pouches starter kit
- 3 year guarantee, CE certified
- Recommended for use with Leitz UDT Pouches



Specifications

Number	75190000
Colour	silver
Material	ABS plastic
Dimensions (W x H x D)	482 x 125 x 400 mm
Laminating Speed	max. 2,000 mm/min; variable
Temperature	max. 145° fixed
Power Supply	220/240 V AC
Pre-Heating Time	1 min
Heating System	4 from outside heated rollers
Mode of Operation	6 roller, no carrier, speed controlled
Max. Laminating Width	320 mm
Max. Laminating Thickness	0.6 mm
Pouch Thickness	80(75)-250 microns
Power Input	2300 W
Dimensions (with Tray) mm	482(L) x 400(W) x 125(H)
Release Mechanism	Electric reverse button
Approx. lamination time (A4)	9 secs (A4 75 microns)
Photo friendly	Yes
Guarantee	3 year
Package content	1
Suitable for	A3 format
Weight	7300 g
Packing unit	1
Pallet quantity	32
Minimum order quantity	1
EAN code	4002432113569