



HeatSeal™ ProSeries 4000LM

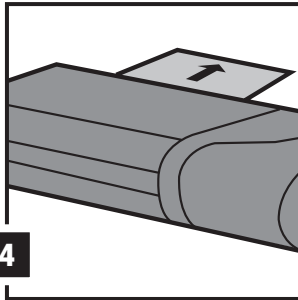
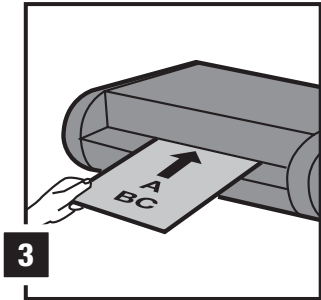
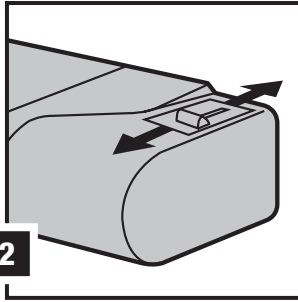
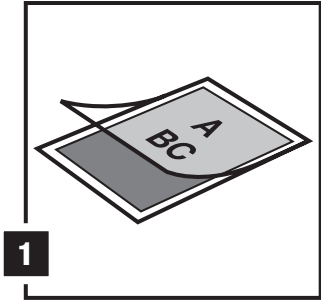
- Ⓒ *Instruction Manual*
- Ⓕ *Manuel d'utilisation*
- Ⓓ *Bedienungsanleitung*
- Ⓘ *Manuale d'istruzioni*
- Ⓝ *Gebruiksaanwijzing*
- Ⓔ *Manual de instrucciones*
- Ⓟ *Manual de Instruções*
- Ⓣ *Kullanım Kılavuzu*
- Ⓖ *Οδηγίες*
- Ⓓ *Brugsvejledning*
- Ⓕ *Käyttöopas*
- Ⓝ *Bruksanvisning*
- Ⓢ *Bruksanvisning*
- Ⓟ *Instrukcja obsługi*
- Ⓒ *Návod k obsluze*
- Ⓕ *Használati útmutató*
- Ⓒ *Руководство по эксплуатации*



ATTENTION

To register and activate
the warranty go to
www.accoeurope.com

English	4
Français	5
Deutsch	6
Italiano	7
Nederlands	8
Español	9
Português	10
Türkçe	11
Ελληνικά	12
Dansk	13
Suomi	14
Norsk	15
Svenska	16
Polski	17
Česky	18
Magyar	19
Русский	20



Specifications

	GBC HeatSeal 4000LM
Mode of operation	carrier free
Heating system	ceramic, electronically regulated
Operating Temperature	variable
Warm up Time	approx. 1 minute
Mains voltage	230V/50Hz
Power consumption	1380W
Max. thickness of laminating pouches	80-250 microns
Net weight	6,8 Kg
Dimensions mm (hxxwxd)	105x675x190
Technical approvals, applied for	GS/TUV/CE

Subject to technical changes without prior notice.

Safety instructions

Please read these instructions carefully and keep them in a safe place for later reference.

- Set the machine up on a stable surface close to a power socket (230/240 volts).
- Ensure that the laminator is protected against humidity, dust and direct sunlight and is not positioned near heaters or air conditioners.
- Laminate only paper or similar materials with a maximum thickness of 0.4 mm.
- Ensure there is sufficient space behind the laminator so the document can easily be removed.
- Only use original GBC accessories.
- The unit is maintenance-free if handled correctly.

Preparing the machine

Insert the mains plug into the socket and turn on the machine (red indicator lights up). The working temperature is reached after about 1 minute and the green indicator lights up. Your machine is now ready to operate.

Preparing your document

Select a suitable laminating pouch for your document. Insert the document into the laminating pouch from the open side. Then close the laminating pouch with the document centred for an even border. A border of approx. 3mm (1/4") is recommended to be left around your document (fig. 1).

Guarantee

Operation of this machine is guaranteed for two years from date of purchase, subject to normal use. Within the guarantee period, Acco Brands Europe will at its own discretion either repair or replace the defective machine free of charge. Defects due to misuse or use for inappropriate purposes are not covered under the guarantee. Proof of date of purchase will be required. Repairs or alterations made by

Register this product online at www.accoeurope.com

Selecting the temperature

Your GBC laminator has a slider temperature control which enables you to attain the optimum lamination results with a wide range of material thickness (plastic sheets and paper). As a basic rule: the thicker the document and the plastic pouch, the higher the temperature must be ~ the thinner the document and the plastic pouch, the lower the temperature must be. As a guideline, the scale on the right shows temperature ranges for pouch thickness of 80, 125 and 250 mic and documents with a paper weight of 80 gsm. The best way to find out the suitable temperature for what you wish to laminate is to test various settings. Start with a low temperature and raise the level gradually until you are satisfied with the lamination result (fig. 2).

Laminating

Guide the laminating pouch with the closed side first, straight and centred into the laminating channel until it is picked up and drawn in by the feed rollers (fig. 3).



Risk of injury! The appliance has rotating rollers. Keep clothes, jewellery and long hair away from the laminating channel.

Removing the document

The laminated document exits automatically from the rear of the laminator. Remove the laminated document and check the results (fig. 4).

persons not authorised by Acco Brands Europe will invalidate the guarantee. It is our aim to ensure that our products perform to the specifications stated. This guarantee does not affect the legal rights which consumers have under applicable national legislation governing the sale of goods.