

# ReXel®

## Instruction Manual

**Promax QS RSX1538**  
**Promax QS RSS1838**



**start here**

démarrez ici  
starten sie hier  
iniziare qui  
begin hier  
empieza aquí  
comece aqui

buradan başlayın  
ξεκινήστε εδώ  
start her  
aloita tästä  
start her  
börja här

rozpocznij tutaj  
začnete zde  
kezdés itt  
начинать здесь

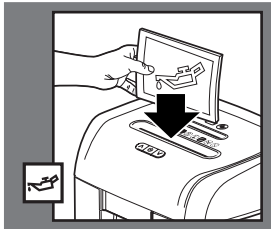
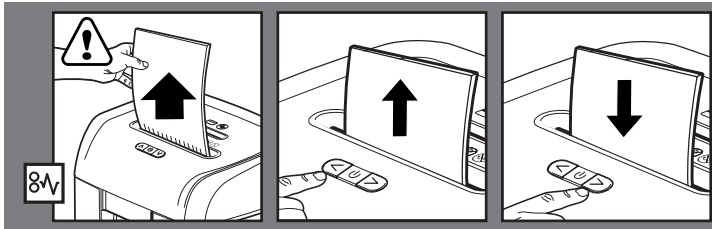
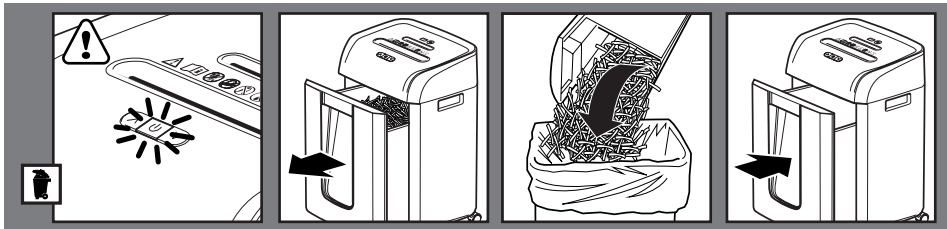
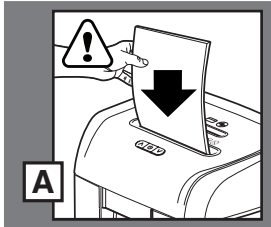
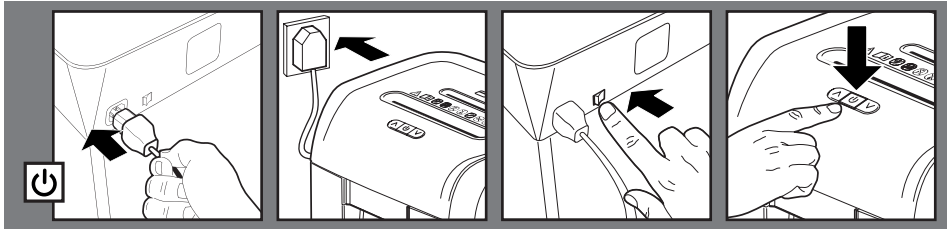
## Specifications

Model	Promax QS RSX1538	Promax QS RSS1838
Cut level	P4 (4x35mm)	P2 (6mm)
Sheet Capacity	6 sheets (80 gsm)	8 sheets (80 gsm)
Run Time / Cool Down Time	8 mins on / 30 mins off	8 mins on / 30 mins off
Bin Size	12 litres	12 litres
Volts / Hz	230-240V AC / 50Hz	230-240V AC / 50Hz
Amperage	1.2 A	1.0 A

## Promax QS RSX1538 Promax QS RSS1838

EN	4
FR	5
DE	6
IT	7
NL	8
ES	9
PT	10
TR	11
GR	12
DA	13
FI	14
NO	15
SV	16
PL	17
CS	18
HU	19
RU	20







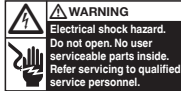
## Please read and keep these important safety instructions



For a copy of the operating instructions, hints & tips and troubleshooting guide, please visit [www.rexeurope.com](http://www.rexeurope.com)



The following symbol which is found on the product indicates you could be seriously hurt or killed if you open the machine. **DO NOT OPEN.**



**Warning:** Do not touch cutters, beware of sharp edges.



**Warning:** Moving parts hazard, keep hands away from rollers whilst in operation.

- Only use the unit for its intended purpose.
- The unit must only be connected to a supply voltage corresponding to the electrical rating shown on the unit.
- Unit should be connected to a socket outlet near the equipment that is easily accessible.
- Do not connect to multi adaptors or use with an extension cable.
- Failure to follow these instructions could result in damage/injury and will invalidate your warranty.
- Do not attempt to service or repair the unit yourself.
- In the event of a fault, unplug the unit and contact an authorised Rexel service representative for any required repairs.
- If recycling, separate paper and credit card shreds.
- Do not use this unit if the cable or plug have been damaged.
- Power cord must be connected to a socket-outlet with earthing connection.
- Unplug this equipment when not in use for an extended period of time.

## Warning symbols



Keep long hair clear



Ties and loose clothing hazard



Keep loose jewellery clear



Do not reach into opening



This equipment is not intended for use by children



No aerosols



Manual feed slot capacity



Will accept small staples



Will accept small paperclips



No oil, use Rexel oil sheets only



No CDs



## Waste Electrical and Electronic Equipment (WEEE)

At the end of its useful life, your product is considered to be WEEE. As such, it is important to note that: WEEE is not to be disposed of as unsorted municipal waste. It is to be collected separately such that it can be disassembled so its components and materials can be recycled, re-used, and recovered (burned for energy content in the production of electricity).

Public collection points have been set up by municipalities for the collection of WEEE, free of charge to you.

Please return your WEEE to the collection facility nearest your home or office.

If you have difficulty locating a collection facility, the retailer that sold you the product should accept your WEEE.

If you are no longer in contact with your retailer, please contact ACCO for assistance with this matter.

Recycling of WEEE is geared toward protecting the environment, protecting human health, preserving raw materials, improving sustainable development, and ensuring a better supply of commodities in the European Union. This will be achieved by retrieving valuable secondary raw materials and reducing the disposal of waste. You can contribute to the success of these goals by returning your WEEE to a collection facility.

Your product is marked with the WEEE symbol (whee bin with an X through it). This symbol is to inform you that the WEEE is not to be disposed of as unsorted municipal waste.

## Warranty

Operation of this machine is warranted for two years from date of purchase, subject to normal use. Within the warranty period, ACCO Brands Europe will at its own discretion either repair or replace the defective machine free of charge. Defects due to misuse or use for inappropriate purposes are not covered under the warranty. Proof of date of purchase will be required. Repairs or alterations made by persons not authorised by ACCO Brands Europe will invalidate the warranty. It is our aim to ensure that our products perform to the specifications stated. This warranty does not affect the legal rights which consumers have under applicable national legislation governing the sale of goods.

*This warranty does not apply to Australian customers - see warranty on page 21.*

## Indicators



Cooling down



Paper jam



Bin Full

## Accessories Only use Rexel accessories:

- |                           |           |
|---------------------------|-----------|
| Recycling Waste Sack (20) | - 2102577 |
| Oil Sheets (12)           | - 2101948 |
| Oil Sheets (20)           | - 2101949 |

Please note, the maximum sheet capacity may vary due to factors such as paper density, texture and humidity.